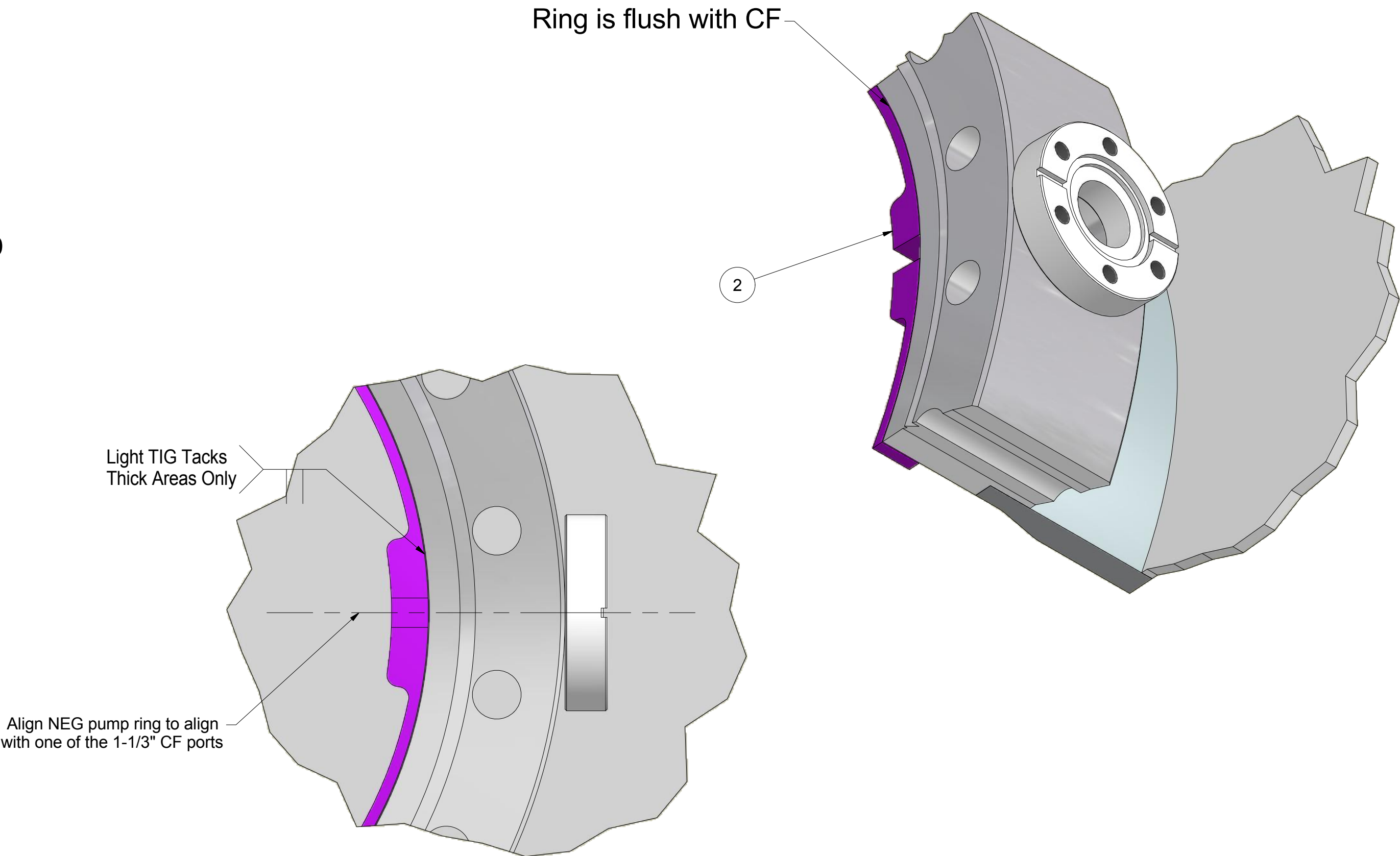
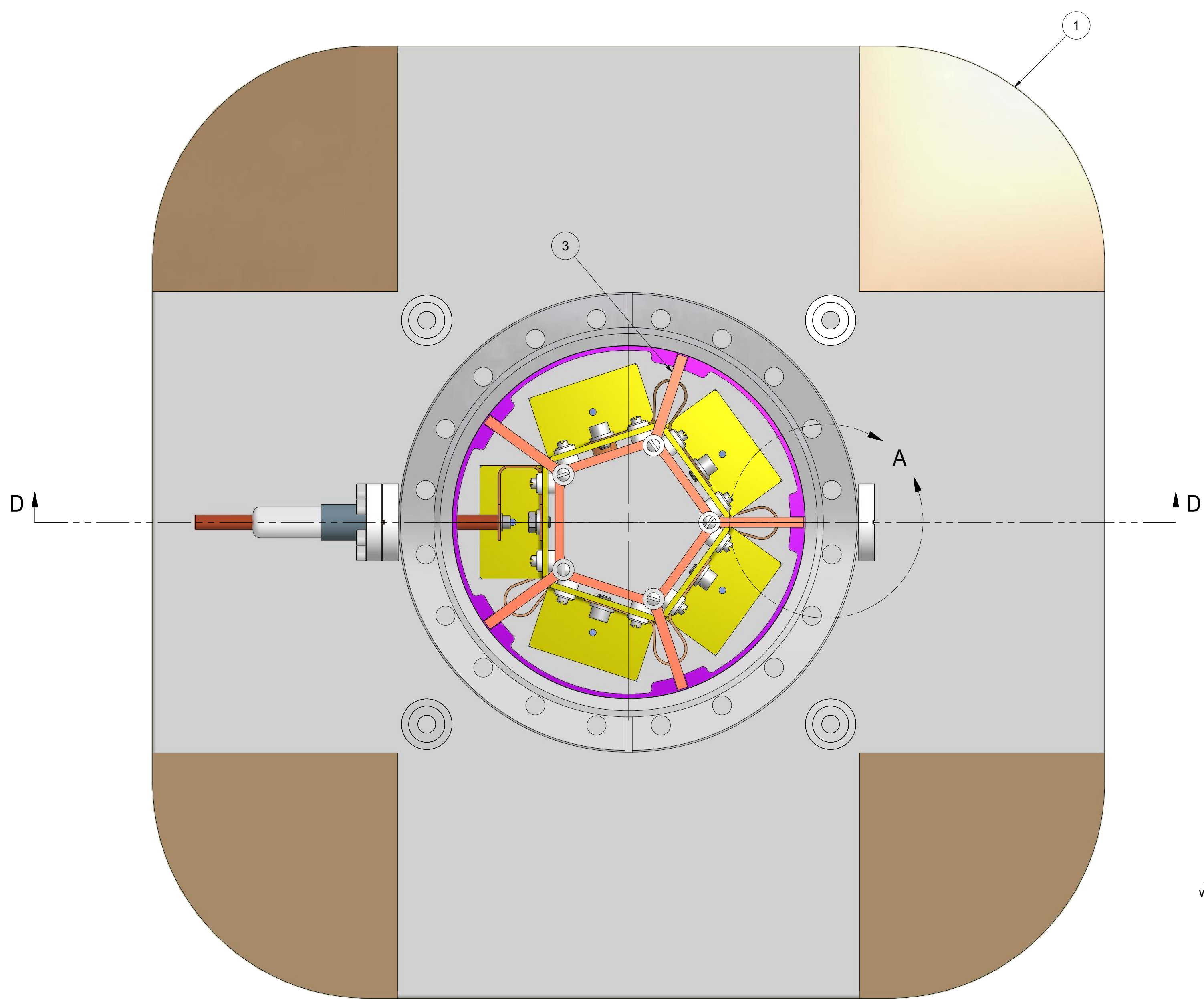
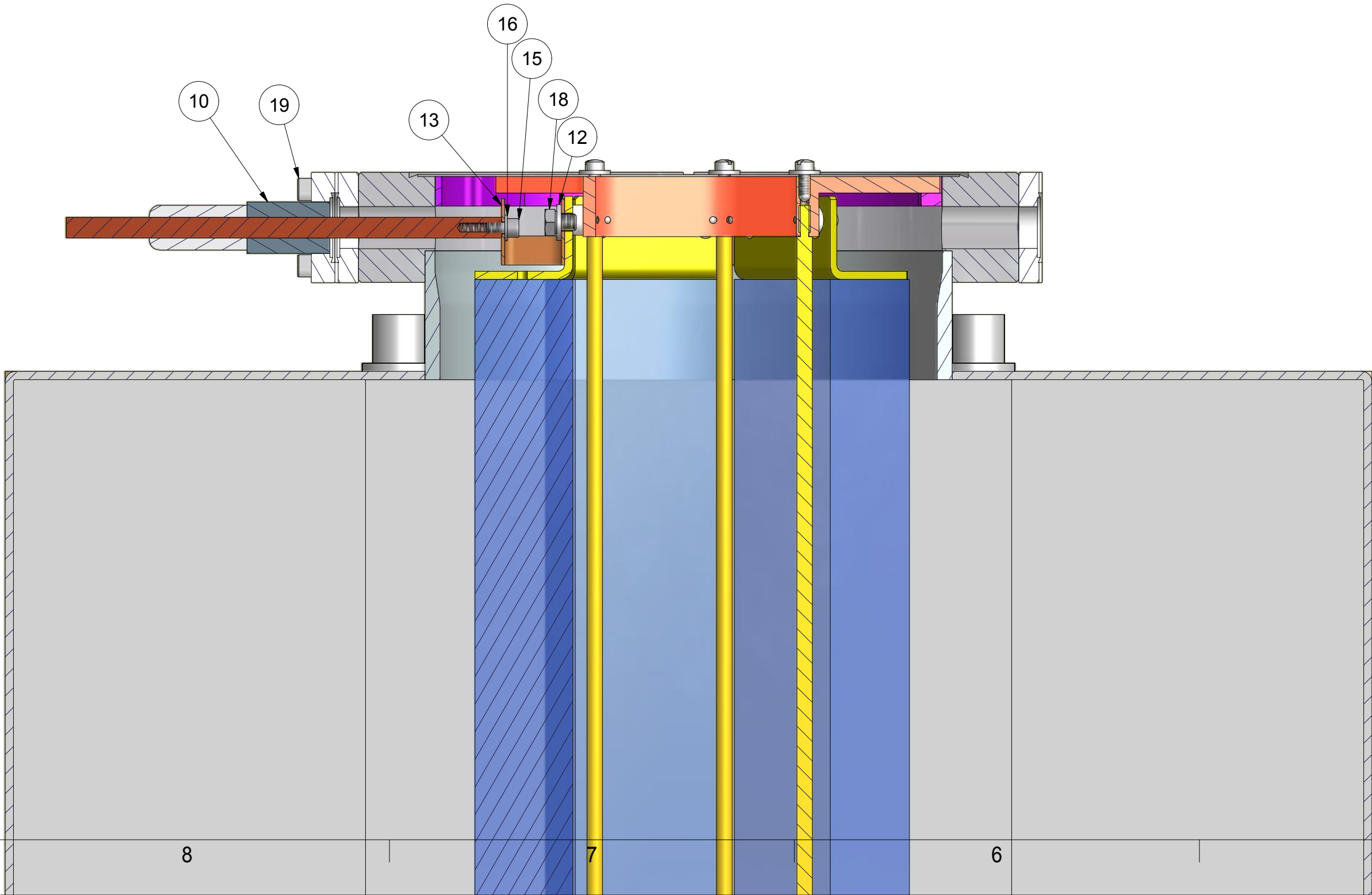


REVISIONS				
SYM.	ZONE	DESCRIPTION	DATE	APP.
A	Mult.	Added Power Feedthru for NEG, Parts List Changes	7/18/11	KWS



DETAIL A
SCALE 1.50 : 1

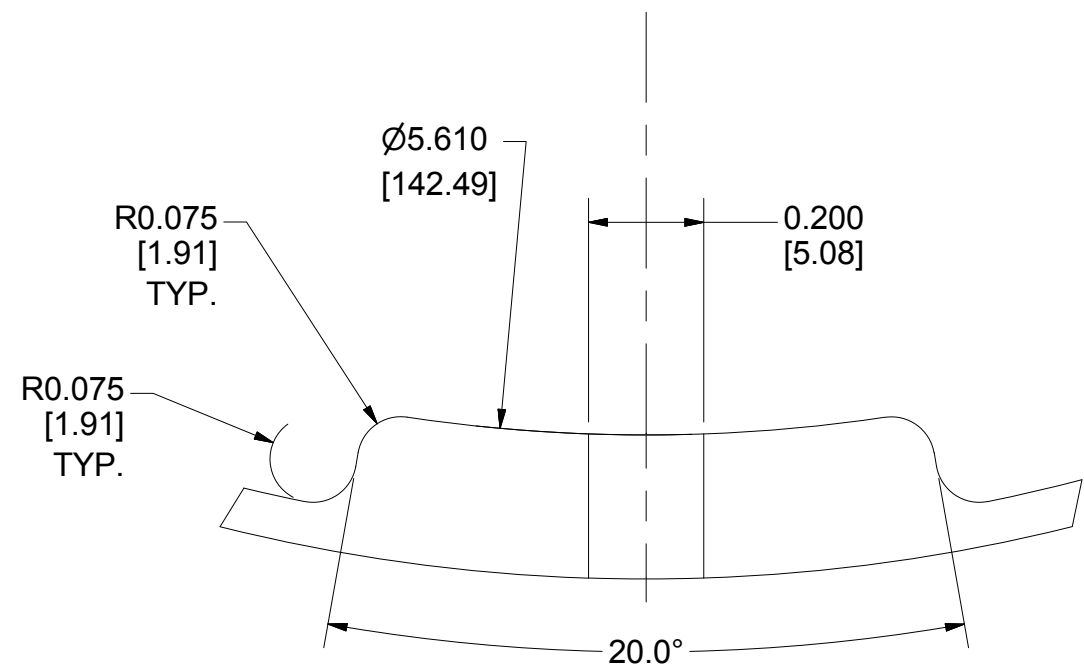
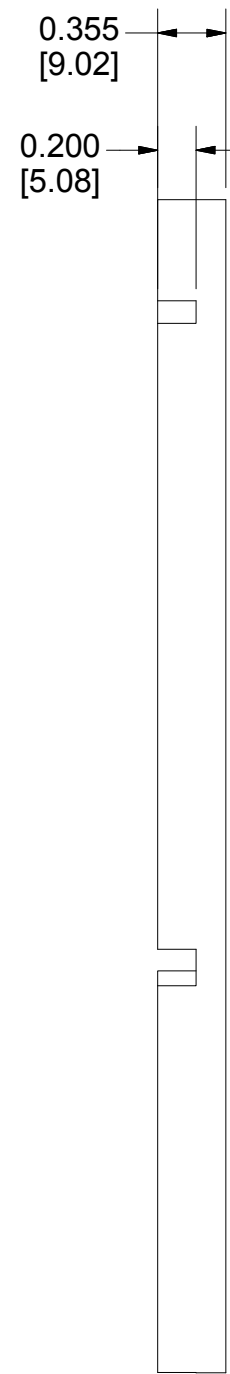
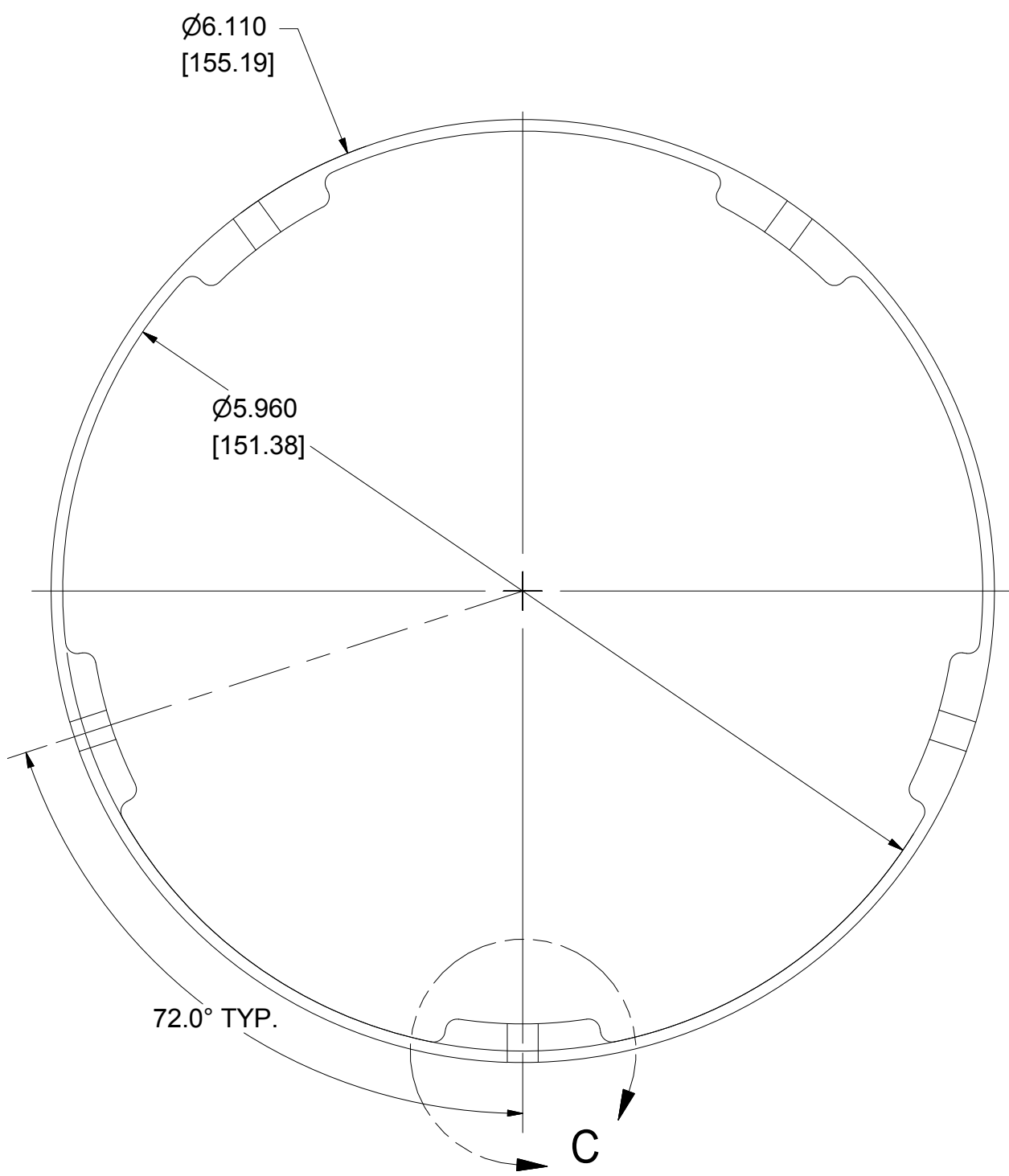


19	Purchased	#8-32 x 1/2 Socket Head Cap Screw	6			MDC's #190000	
18	Purchased	Hex Head CS M5 x 6mm	1				
16	Purchased	#6 Plain Washer	1				
15	Purchased	SHCS 6-32 x 1/4"	1				
13	7101-123 Sh. 3	Power Connector Jumper	1				
12	Purchased	M5 Plain Washer	1				
10	7101-123 Sh. 3	Modified Feedthru	1			MDC #640000	
4	7101-123 Sh. 3	NEG Mesh Screen	1			Not Shown	
3	7101-123 Sh. 2	NEG Pump Top Support Star	1				
2	7101-123 Sh. 2	PE Ion Pump NEG Locating Ring	1				
1	Existing Part	PE 500ls pump	4			Perkin Elmer	

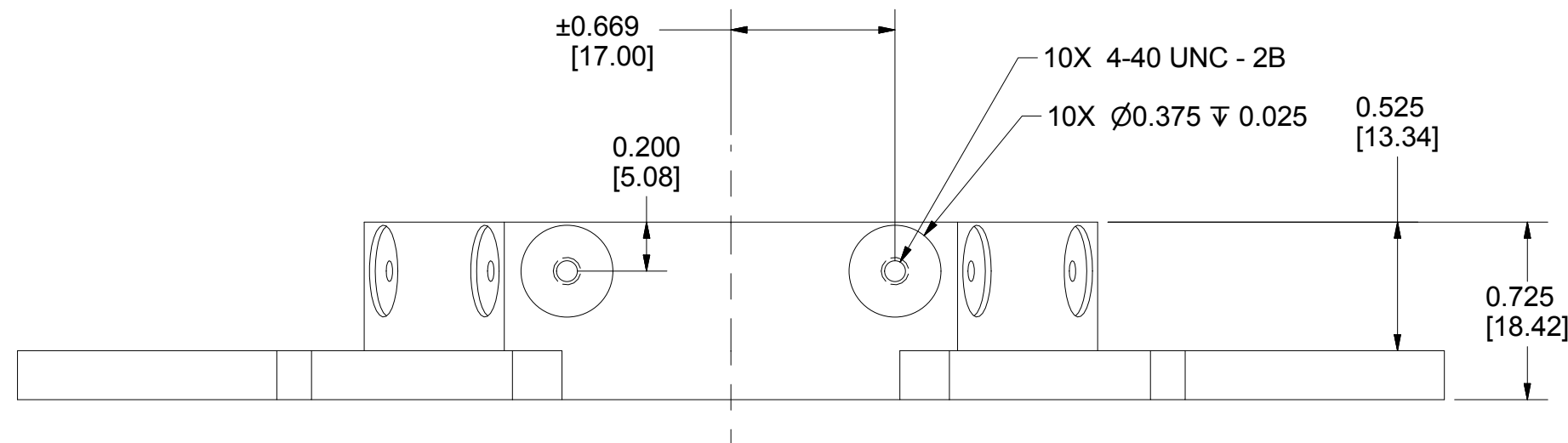
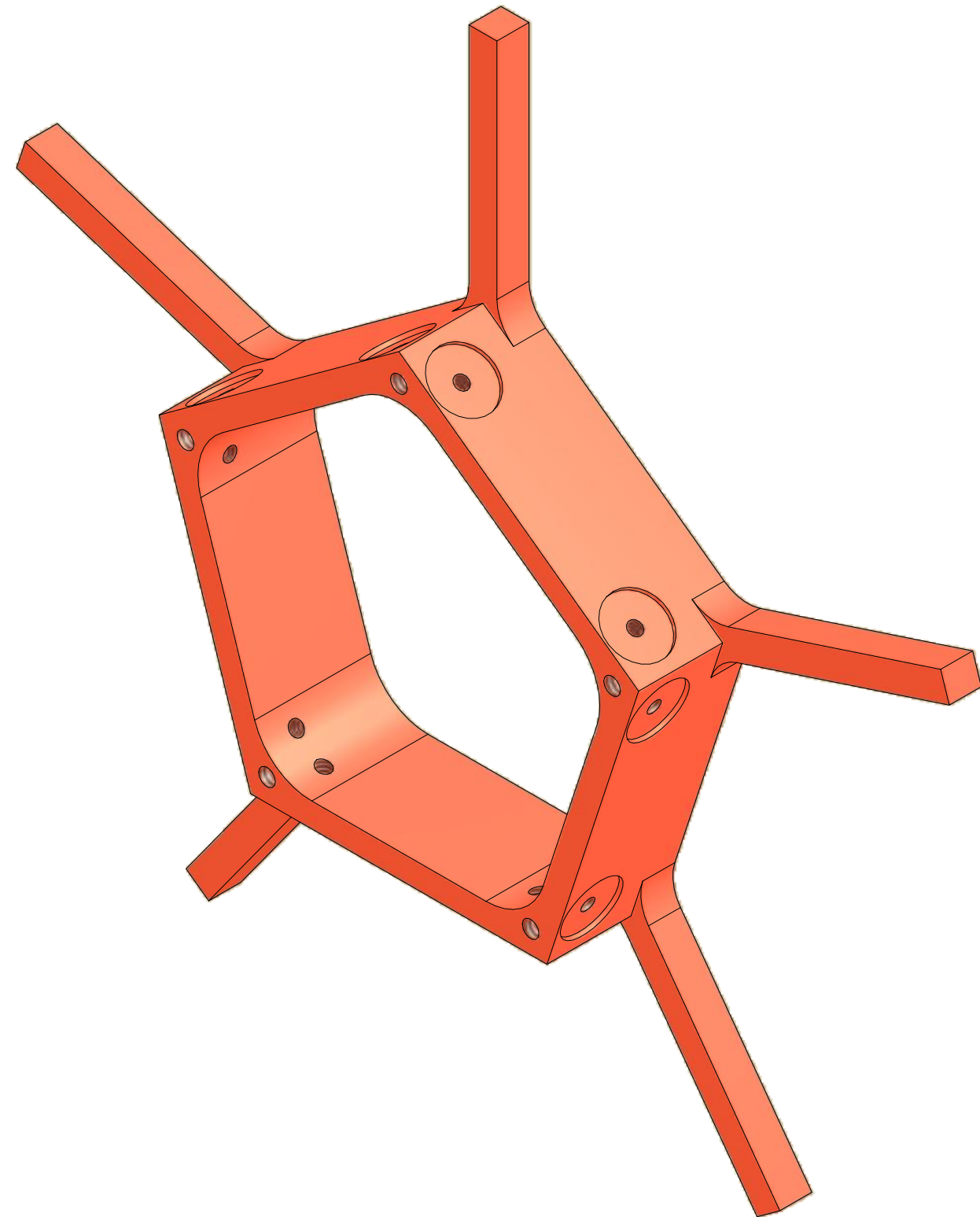
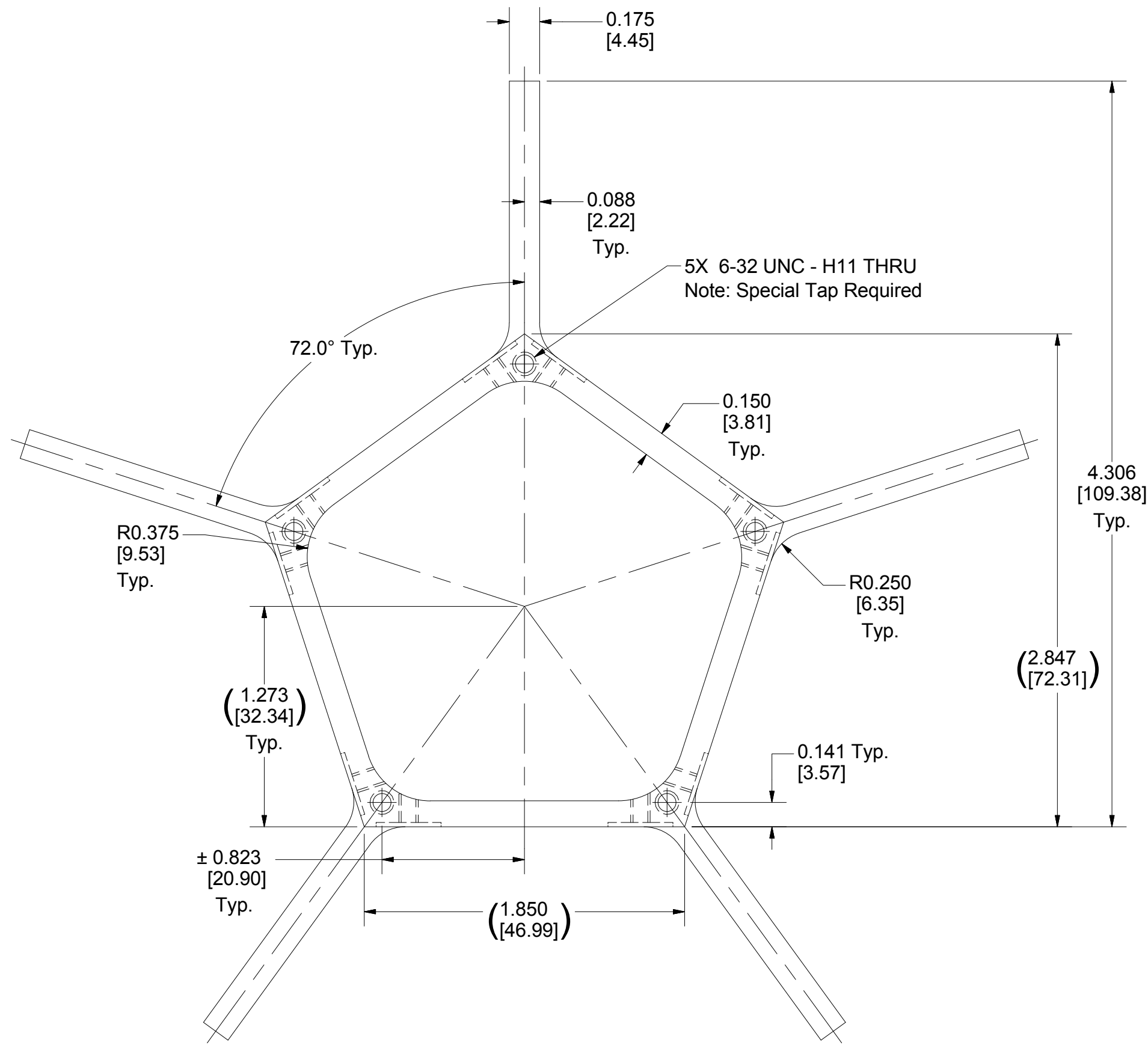
		ITEM		DWG. NO.		DESCRIPTION			G1		G2		G3		REMARKS		REV.		
									QUANTITY										
D		PRINT DISTR.		PLOT DATE: 3/6/2013 CAD FILE NAME: 7101-123.idw															
7101-123 SH. NO. 1 OF 3		CR-1		UNLESS OTHERWISE SPECIFIED: DIMENSIONS ARE IN INCHES: TOLERANCES ON: 0 ± .02 .00 ± .010 .000 ± .005 FRACTIONS ± 1/32 ANGLES ± 0.5° ALL SURFACES			<div><div>CORNELL UNIVERSITY</div><div>LEPP</div><div>LABORATORY FOR ELEMENTARY-PARTICLE PHYSICS</div></div> <div>CORNELL UNIVERSITY Floyd R. Newman Laboratory Ithaca, NY 14853</div>												
				Modifications to PE Ion Pump for NEG Insert															
REV. A		CHECKED BY:		DRAWN BY KWS			DRAWN FOR KWS			DATE 4/18/2011		SCALE		D		7101-123 SH. NO. 1 OF 3		REV. A	
		APPROVED BY:																	

Modifications to PE Ion Pump for NEG Insert

REVISIONS				
SYM.	ZONE	DESCRIPTION	DATE	APP.
A	Mult.	Shifted Hole Position for Clearance, Tap Designation.	3/5/13	KWS


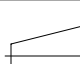
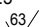



DETAIL C
SCALE 3 : 1



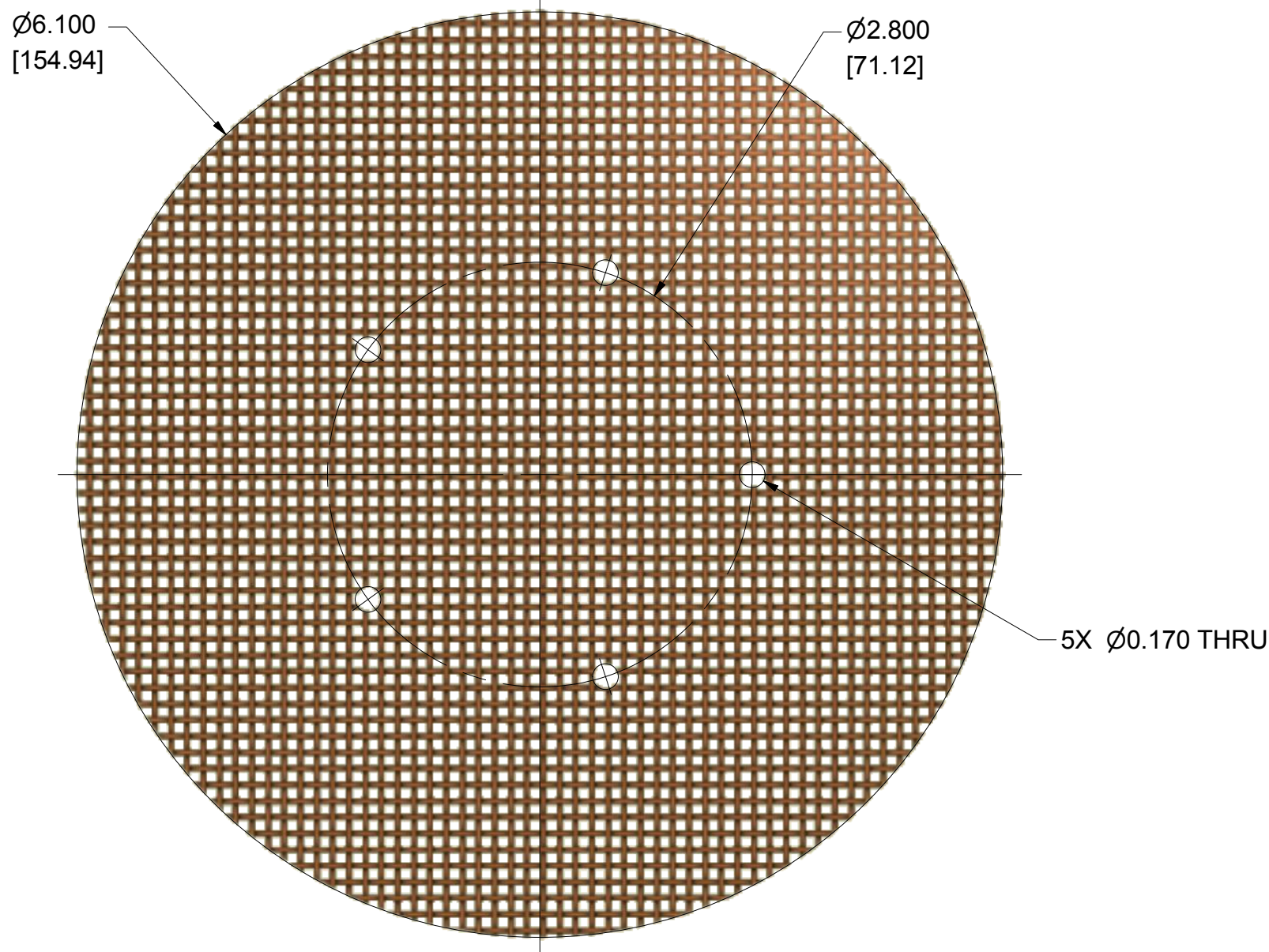
- 3 NEG Insert Top Hub (enlarged)
FILE NAME: 7101-123
SHEET NO.: 2
DFT. SCALE: 2:1
MATERIAL: Stainless Steel
QTY: 1
NOTES: Replaces 7101-018 Item 15
Note Use Special #6-32 - H11 Tap

- 2 Neg Pump Support Ring
FILE NAME: 7101-123
SHEET NO.: 2
DFT. SCALE: 1:1
MATERIAL: Stainless Steel
QTY: 1
NOTES:

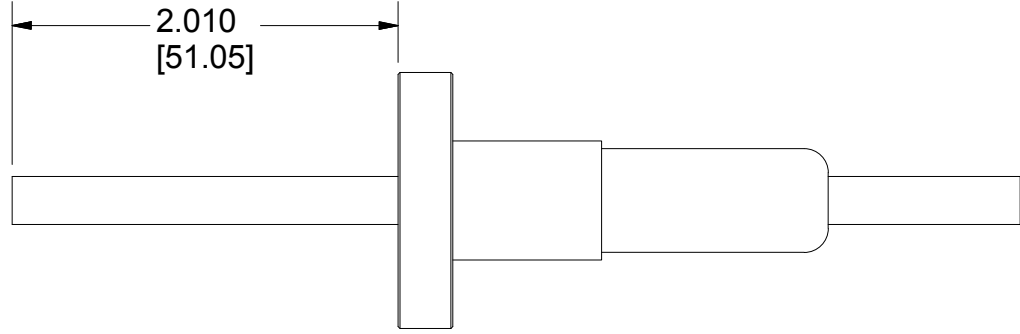
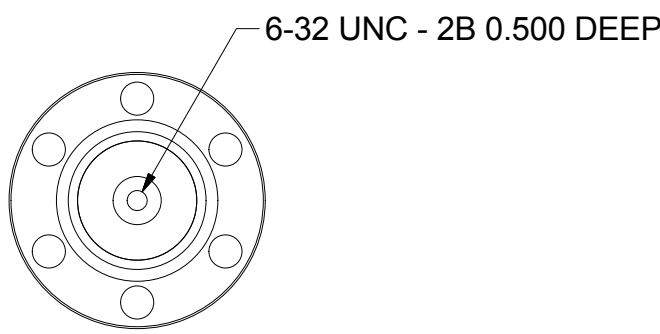
 	ITEM	DWG. NO.	DESCRIPTION			G1	G2	G3	REMARKS	REV.	
							QUANTITY				
D	PRINT DISTR.	PLOT DATE: 3/6/2013 CAD FILE NAME: 7101-123.idw									
7101-123 SH. NO. 2 OF 3	CR-1	UNLESS OTHERWISE SPECIFIED: DIMENSIONS ARE IN INCHES; TOLERANCES ON: .0 ± .02 .00 ± .010 .000 ± .005 FRACTIONS ± 1/32 ANGLES ± 0.5° ALL SURFACES 			<div><div>CORNELL UNIVERSITY Floyd R. Newman Laboratory Ithaca, NY 14853</div></div> <div>Modifications to PE Ion Pump for NEG Insert</div>						
	CHECKED BY:	DRAWN BY KWS									DRAWN FOR KWS
	A	REV.	APPROVED BY:								

Modifications to PE Ion Pump for NEG Insert

REVISIONS				
SYM.	ZONE	DESCRIPTION	DATE	APP.
A	Mult.	Added items 10, 13	7/18/11	KWS

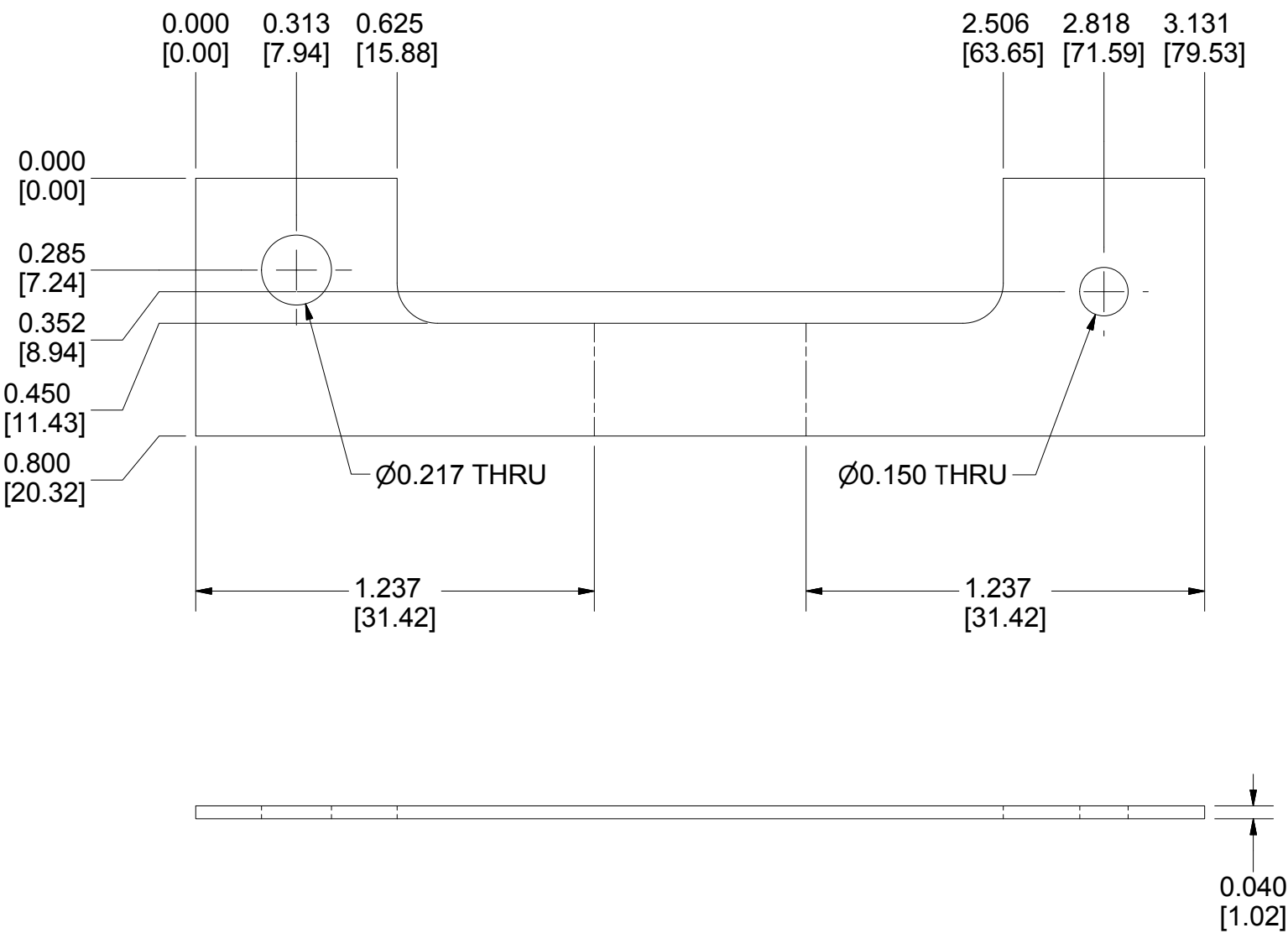


4 **NEG Pump Mesh Screen**
FILE NAME: 7101-123
SHEET NO.: 3
DFT. SCALE: 1:1
MATERIAL: Stainless Screen
QTY: 1
NOTES: Hole Stretched or Formed without Cutting Mesh



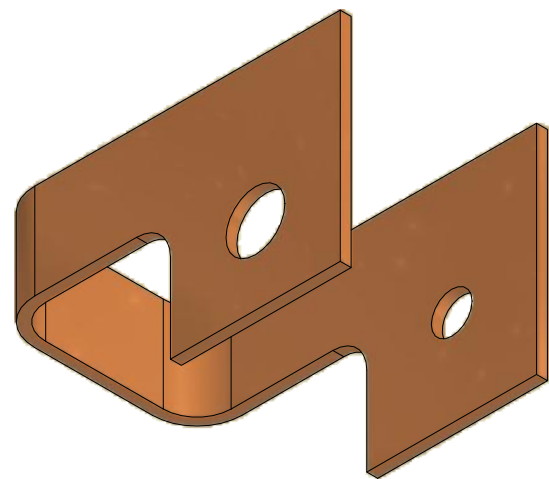
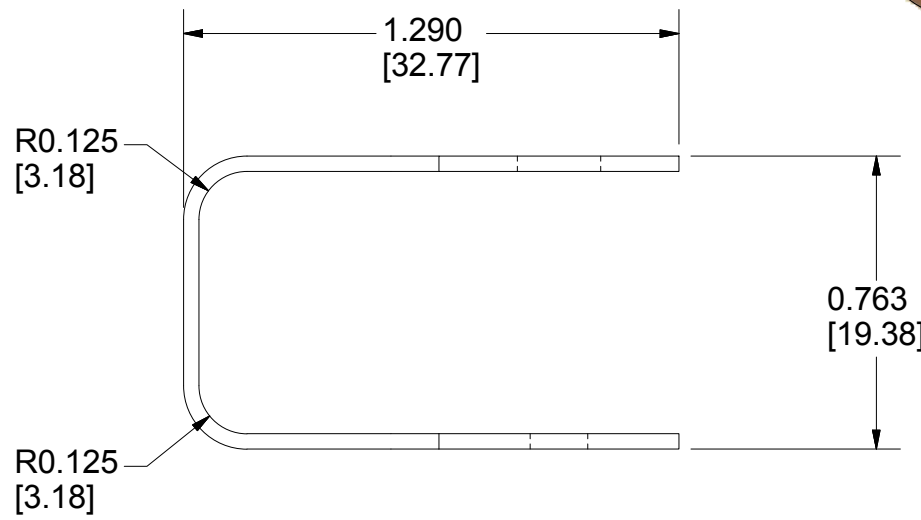
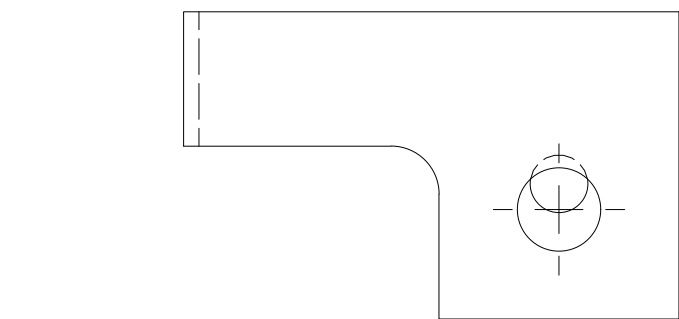
10 **Modifications to MDC Feedthru**
FILE NAME: 7101-123
SHEET NO.: 3
DFT. SCALE: 1:1
MATERIAL: Assy.
QTY: 1
NOTES:


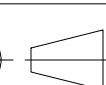
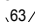

Flat



13 **Power Lead Jumper**
FILE NAME: 7101-123
SHEET NO.: 3
DFT. SCALE: 2:1
MATERIAL: OFE Copper
QTY: 1
NOTES:

Folded



 		ITEM		DWG. NO.		DESCRIPTION		G1		G2		G3		REMARKS		REV.	
D		PRINT DISTR.		PLOT DATE: 3/6/2013 CAD FILE NAME: 7101-123.idw													
		CR-1		<div><div><div>UNLESS OTHERWISE SPECIFIED:</div><div>DIMENSIONS ARE IN INCHES:</div><div>TOLERANCES ON:</div><div>Ø .02</div><div>.000 ± .010</div><div>.000 ± .005</div><div>FRACTIONS ± 1/32</div><div>ANGLES ± 0.5°</div><div>ALL SURFACES </div></div><div><div><div>CORNELL UNIVERSITY</div><div></div><div>LABORATORY FOR ELEMENTARY-PARTICLE PHYSICS</div></div><div><div>CORNELL UNIVERSITY</div><div>Floyd R. Newman Laboratory</div><div>Ithaca, NY 14853</div></div></div><div>Modifications to PE Ion Pump for NEG Insert</div></div>													
7101-123 SH. NO. 3 OF 3		REV. A		CHECKED BY:		DRAWN BY: KWS		DRAWN FOR: KWS		DATE: 4/18/2011		SCALE: D		7101-123 SH. NO. 3 OF 3		REV. A	
				APPROVED BY:													